

MPLAB® Visual Device Initializer

Summary

Configuring a powerful 16-bit MCU or DSP can be a complex and challenging task. MPLAB Visual Device Initializer allows users to configure the entire processor graphically, and when complete, a mouse click generates code usable in Assembly or C programs.

MPLAB Visual Device Initializer does extensive error checking on assignments and conflicts on pins, memories and interrupts as well as selection on operating conditions. The generated code files are seamlessly integrated with the rest of the application code through MPLAB project.

The detailed report on resource assignment and configuration simplifies project documentation.

MPLAB VDI is a standard plug-in to MPLAB Integrated Development Environment (IDE) and can be invoked from within MPLAB under the Tools menu.

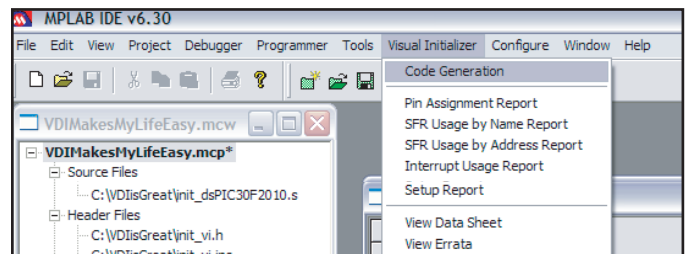
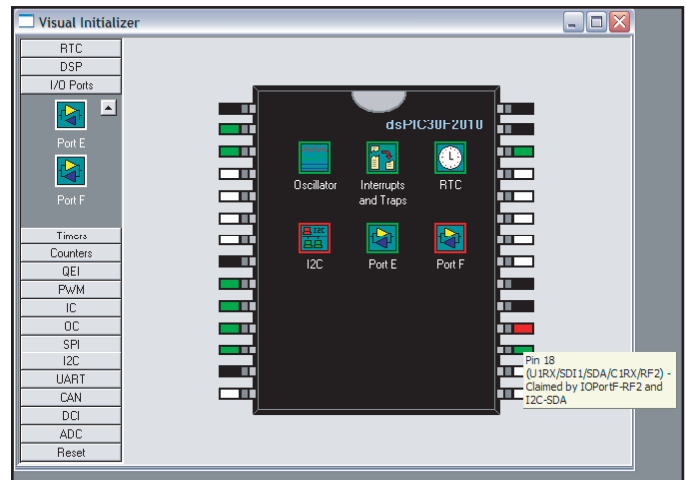
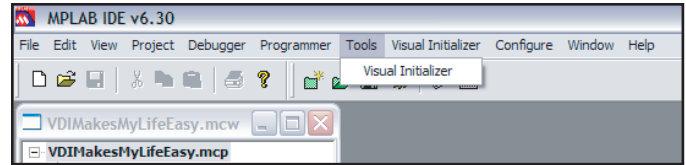
Features

Key features of the MPLAB Visual Device Initializer include:

- Drag and drop feature selection
- One click configuration
- Extensive error checking
- Generates initialization code
- Integrates seamlessly in MPLAB project
- Printed reports eases project documentation requirements

Host System Requirements

- PC-compatible system with an Intel Pentium® class or higher processor, or equivalent
- A minimum of 16 MB RAM
- A minimum of 40 MB available hard drive space
- CD ROM drive
- Microsoft Windows® 98, Windows 2000, Windows XP or Windows NT®



MICROCHIP

Development Systems

Microchip Technology Incorporated

Part Numbers and Ordering Information:

MPLAB Visual Device Initiator

Description	Availability
Available on the Microchip web site: www.microchip.com Download and install MPLAB IDE.	Q4 2003

Development Tools from Microchip

MPLAB® IDE	Integrated Development Environment (IDE)
MPASM™ Assembler	Universal PICmicro macro-assembler
MPLINK™ Linker/MPLIB™ Librarian	Linker/Librarian
MPLAB C17	C compiler for PIC17CXXX MCUs
MPLAB C18	C compiler for PIC18CXXX MCUs
MPLAB SIM Simulator	Software Simulator
MPLAB ICD 2	In-Circuit Debugger
MPLAB ICE 2000	Full-featured modular in-circuit emulator
PICSTART® Plus Programmer	Entry-level development kit with programmer
PRO MATE® II Device Programmer	Full-featured, modular device programmer
KEELOQ® Evaluation Kit	Encoder/Decoder evaluator
KEELOQ Transponder Evaluation Kit	Transmitter/Transponder evaluator
microID™ Developer's Kit	125 kHz and 13.56 MHz RFID development tools
MCP2510 CAN Developer's Kit	MCP2510 CAN evaluation/development tool

Americas		Asia/Pacific		Europe	
Atlanta	(770) 640-0034	Australia	61-2-9868-6733	Austria	43-7242-2244-399
Boston	(978) 692-3848	China – Beijing	86-10-85282100	Denmark	45-4420-9895
Chicago	(630) 285-0071	China – Chengdu	86-28-86766200	France	33-1-69-53-63-20
Dallas	(972) 818-7423	China – Fuzhou	86-591-7503506	Germany	49-89-627-144-0
Detroit	(248) 538-2250	China – Hong Kong SAR	852-2401-1200	Italy	39-0331-742611
Kokomo	(765) 864-8360	China – Qingdao	86-532-5027355	Netherlands	31-416-690399
Los Angeles	(949) 263-1888	China – Shanghai	86-21-6275-5700	United Kingdom	44-118-921-5869
Phoenix	(480) 792-7966	China – Shenzhen	86-755-82901380		
San Jose	(408) 436-7950	China – Shunde	86-765-8395507		As of 9/1/03
Toronto	(905) 673-0699	India	91-80-2290061		
		Japan	81-45-471- 6166		
		Korea	82-2-554-7200		
		Singapore	65-6334-8870		
		Taiwan	886-2-2717-7175		
		Taiwan – Kaohsiung	886-7-536-4818		

Microchip Technology Inc. • 2355 W. Chandler Blvd. • Chandler, AZ 85224-6199 USA • (480) 792-7200 • FAX (480) 792-7277

The Microchip name and logo, the Microchip logo, dsPIC, KEELOQ, MPLAB, PIC, PICmicro, PICSTART, PRO MATE and PowerSmart are registered trademarks of Microchip Technology Incorporated in the U.S.A. and other countries. FilterLab, microID, MXDEV, MXLAB, PICMASTER, SEEVAL and The Embedded Control Solutions Company are registered trademarks of Microchip Technology Incorporated in the U.S.A. Accuron, Application Maestro, dsPICDEM, dsPICDEM.net, ECAN, ECONOMONITOR, FanSense, FlexROM, fuzzyLAB, In-Circuit Serial Programming, ICSP, ICEPIC, microPort, Migratable Memory, MPASM, MPLIB, MPLINK, MPSIM, PICC, PICKIT, PICDEM, PICDEM.net, PowerCal, PowerInfo, PowerMate, PowerTool, rLAB, rPIC, Select Mode, SmartSensor, SmartShunt, SmartTel and Total Endurance are trademarks of Microchip Technology Incorporated in the U.S.A. and other countries. Serialized Quick Turn Programming (SQTP) is a service mark of Microchip Technology Incorporated in the U.S.A. All other trademarks mentioned herein are property of their respective companies.

© 2003, Microchip Technology Incorporated, Printed in the U.S.A., All Rights Reserved. 10/03

DS51443A

